

Surface mount ball and socket test point

**[Key Characteristics**

**Functionality**

- Low contact resistance
- Unique retention mechanism
- Pick and place compatibility

**Resilient**

- Gold plated as standard
- Other finishes available: palladium, silver, nickel, tin lead
- Kinematic design
- -55°C to +125°C

**Adaptable**

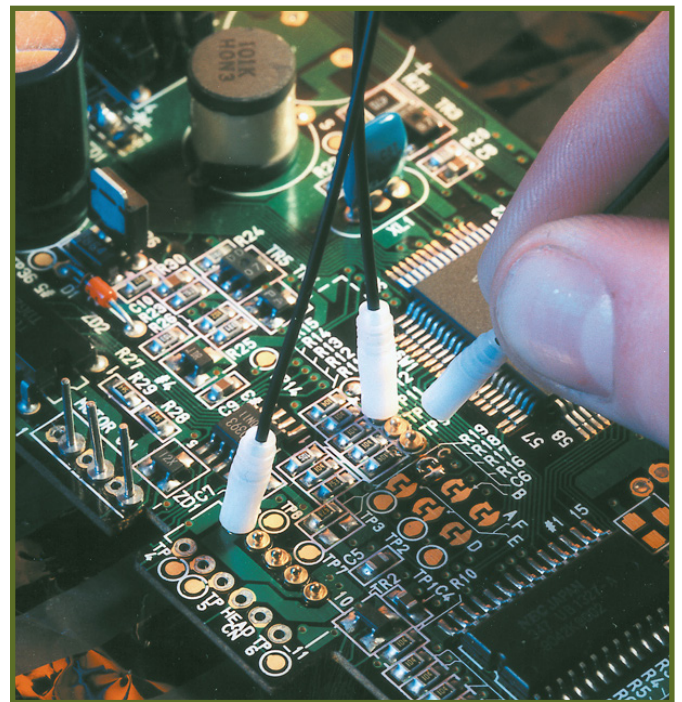
- Available loose or on tape and reel
- Hand or automatic assembly



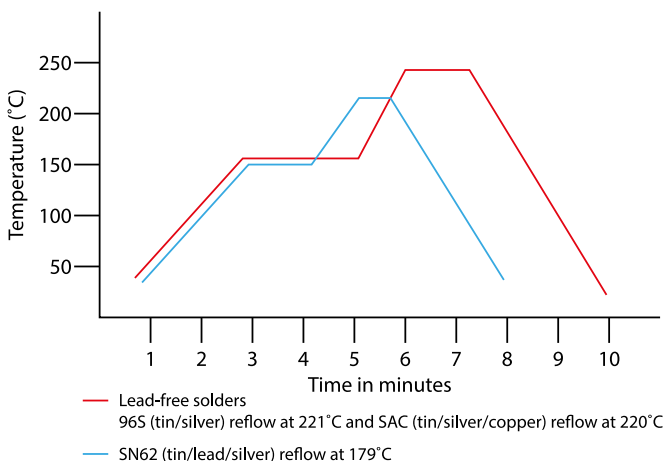
SMOX is a unique test terminal which provides accurate line tests in PCB assembly. Supplied loose or on tape and reel for ease of assembly, its unique retention mechanism enhances reliability through low stress contact.

Due to the unique nature of the SMOX connection system, it represents the only surface mount ball and socket test point available on the market with a specially designed socket for easy low contact resistance and gentle detachment.

Requiring a minimum pad size of only 2 millimetres (0.080”), and being a single pole device, the SMOX can be placed accurately by any pick and place machine in even the most congested designs.



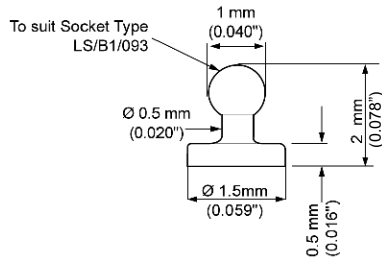
**Typical Soldering Profiles - SMOX to PCB**



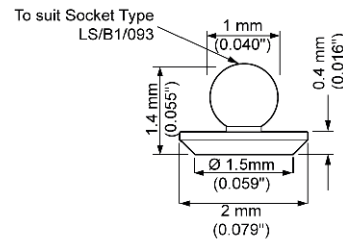
**HT Type SMOX** - For use with ROHS compliant lead-free solders (high temperature). Example: 96S (re-flow at 220°C).

**Standard Type SMOX** - For use with tin lead solders (lower temperature). Example: 60/40, SN62 (re-flow at 179°C).



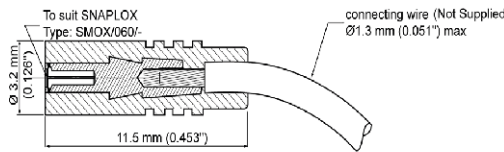


SMOX/060/B1/HT (High Temperature packaged loose)  
 SMOX/060/B1/HT/R2K (High Temperature tape and reel)  
 SMOX/060/B1 (Packaged loose)  
 SMOX/060/B1/R2K (Tape and reel)

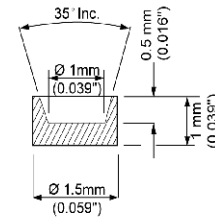


SMOX/060/B1/LP/HT (High Temperature packaged loose)\*  
 SMOX/060/B1/LP/HT/R3K (High Temperature tape and reel)\*  
 SMOX/060/B1/LP (Packaged loose)\*  
 SMOX/060/B1/LP/R3K (Tape and reel)\*

Wires shown for illustration purposes only.



LS/B1/093  
SMOX SOCKET



SMOX/060/TP  
CONTACT TEST POINT

## Technical Information

Test Point and Socket Body	Copper Alloy
Insulation	High Dispersion PTFE
Test Point Finish	Gold (Options Palladium, Silver, Nickel, Tin Lead)
Socket Finish	Silver
Solderability	Exceeds Requirements of BS2011 (IEC 68) Test T MIL-STD-202 Method 208
Maximum Contact Resistance	2 milliOhms
Socket Insulation Resistance	10,000 MegaOhms minimum
Typical Retention Force	0.2Kg (Angles < 60° or ± 30°) Off Perpendicular
Typical Retention Torque	200gcm (Angles > 30° or Perpendicular)
Assembly Tools Socket Assembly	AT1/KP18 and AT1/KP19
Tape	4mm pitch 8mm wide
Reel Sizes SMOX/060/B1/LP/HT/R3K (7 inch)	3000 components
Reel Sizes SMOX/060/B1/HT/R2K (7 inch)	2000 components

